



Druva inSync

Five Steps Guide

The Guide explains a quick five steps procedure to setup the Druva inSync client.



Install inSync Client

Welcome

This five step guide describes the installation and configuration of Druva inSync client using the five simple instructions. Download the Druva inSync client version 5.0 from the Druva website <http://www.Druva.com/download>. Follow the installation steps given below for different Linux packages.

Debian Based Installation

Debian packages are used in distributions based on Debian, such as Ubuntu and others. Using the super user privileges and your native package manger dpkg, install the downloaded inSync client packages. Run the following commands.

```
root@ubuntu:/# dpkg -i inSync-Client-Installer-ver-5.0-<version>.i386.deb
Selecting previously deselected package druva-insync-client.
(Reading database ... 114549 files and directories currently installed.)
Unpacking druva-insync-client (from inSync-Client-Installer-ver-5.0-
<version>.i386.deb) ...
Setting up druva-insync-client (5.0-<version>) ...
```

After installing inSync client, type the command **inSync** in terminal window which will launch the Druva insync client.

```
root@ubuntu:/# inSync
<_MainThread(MainThread, started)> : SyncLog
<Thread(Thread-2, started -1226527888)> : SyncLog
<Thread(Thread-2, started -1226527888)> : inSyncConfig
<Thread(Thread-2, started -1226527888)> : SyncLog
<Thread(Thread-2, started -1226527888)> : HC
```

RPM Based Installation

On systems that use .rpm packages, run the following command. Make sure it requires super user privileges.

```
rpm -ivh inSync-Client-Installer-ver-5.0-<version>.i386.rpm
```

Installing on 64-bit System

Druva inSync currently does not produce packages for 64-bit systems. In order to run Druva inSync client on 64-bit machines, firstly the 32-bit compatibility libraries need to be installed. On Debian-based systems, run the following command:

```
apt-get install ia32-libs
```

For Redhat-based systems, run the following command:

```
yum install glibc
```

This should be sufficient to allow the 32-bit inSync binaries to run on 64-bit systems. On debian, it will be necessary to force installation since the architecture for the package won't match the system architecture. So, for 64-bit systems, the dpkg command should look like this:

```
dpkg -i --force-architecture inSync-Client-Installer-ver-5.0-  
<version>.i386.deb
```



Start inSync Client

Now you have to activate your inSync client. Check the user activation email in your inbox. The email must contain the server URL, email address, and temporary password. Copy these values and paste them in the respective fields. After entering the information, you need to change the temporary password in the following screen.

For adding new devices or restoring files from Web (Web Restore) you must use the changed password.

Activate Druva inSync

You need to activate your account to start using Druva inSync.

If you don't have these details, please contact your system administrator to create an account for you.

Server URL:

Email:

Password:

Cancel Activate

Figure 1: Device activation screen


If you have already activated a couple of inSync devices earlier, then the next screen prompts you to select the **Activate this new device to my account** or **replace an existing device** option.

The first option activates a new device and associates to your account and the second option displays a list of existing devices to replace with this new device. After replacing the device, you can still restore old device's data by selecting the **Restore** option.

If you find difficult to activate the inSync device, contact your inSync administrator immediately.



Configure inSync Client

After successful authentication, the next step is to configure the folder(s) to be backed up. Right click the inSync icon  which is appeared in the system tray and then select the **Configure** option.

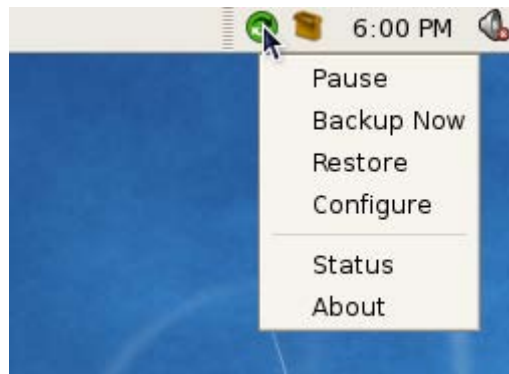


Figure 2: Druva inSync icon in the system tray

This **Configure** option allows you to choose quick configuration folders like desktop files, my document folder, email, favorites, picture folder, and music folder for backup or click **Advanced Configuration** to add specific folders. For more information see step 5.



Set inSync Client Settings

Under the Settings tab, you can adjust the synchronization interval, synchronization bandwidth, and Priority as per your backup needs.

- **Reactivate:** You need to provide the user credentials to reactivate the device. You can either activate as a new device or replace with other connected devices.
- **Set Password:** Change the existing password. You can use this password for restoring files for Web Restore as well. AD (Active Directory) users do not have rights to change the password.
- **Synchronization Interval:** Time interval of synchronization with the server. The minimum synchronization frequency is 20 minutes.
- **Synchronization Bandwidth:** It specifies the maximum bandwidth to be used by the client for all backup needs. Adjust the **Synchronization Bandwidth** limit (in percentage)
- **Priority:** CPU usage for synchronization. A higher CPU usage means a faster backup.

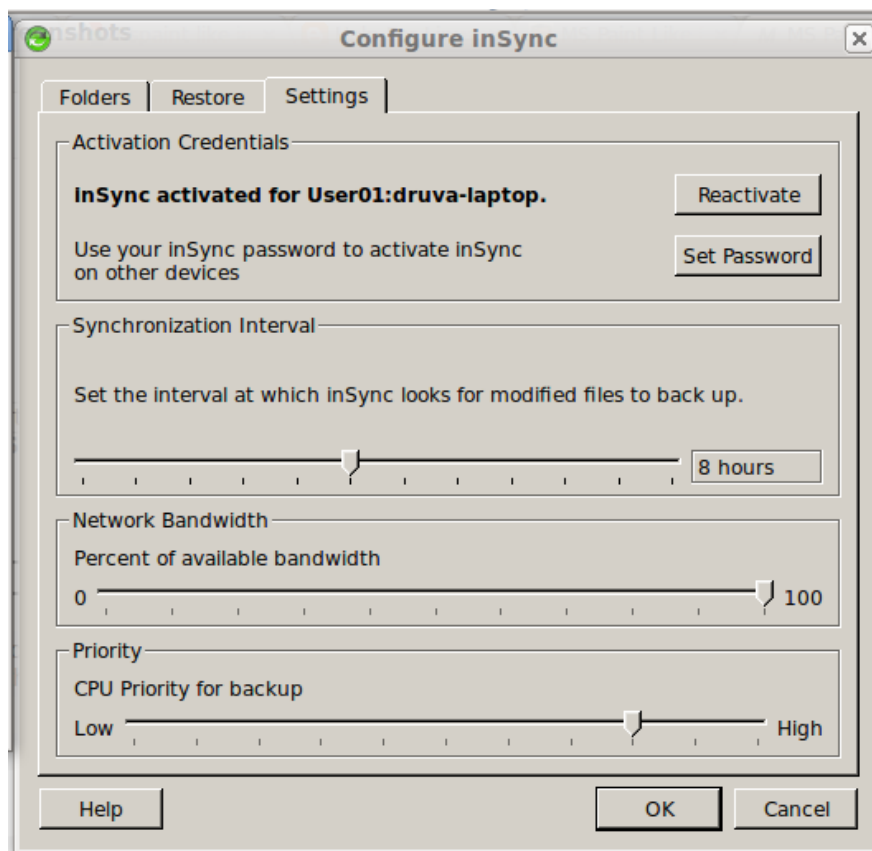


Figure 3: inSync client configuration settings

Druva inSync uses *Opportunistic Scheduling* which means if backups have not occurred for last specified numbers of hours they are started immediately.



Select Folders to Backup

The **Quick Configuration** section allows you to configure Desktop, Email, Pictures, My Documents, Favorites, and Music folders with a single click.

If you want to configure the different folders for backup, follow the simple steps given below.

1. Right-click the inSync icon in the system tray and select the **Configure** option.
2. Click the **Advanced Configuration** button. The **Folders Configured for Backup** screen is displayed.
3. Click the **Add Folder** button to add your own folders for backup, the **inSync New Folder** screen is displayed.
4. Click the **Choose Folder Path** button to select your favorite folders for synchronization. For each selected folder has a unique inSync identifier as well as filter settings associated with the selected folder.

inSync New Folder

Folder Configuration | Exclude Options

Folder Path
To select the folder to be configured for synchronization, click on the following button or directly enter the path to the folder.

Folder path:

Include Filter
Choose what file types you wish to include when synchronizing. You can directly edit the filter list to add or remove file extensions. The extensions are separated by a ;.

Office files ☐ PDF files ☐ HTML files ☐ Email files ☐
Image files ☐ Video files ☐ Audio files ☐ All files ☒

Files/file types

inSync Identifier
inSync identifies a folder configured for synchronization using a unique identifier. You can keep the identifier auto-generated by inSync or change it.

inSync identifier:

Figure 4: inSync folder configuration

Starting Backup

Your inSync client is now configured and ready to backup your critical data automatically. You can choose to start initial sync immediately using the **Sync Now** option (left-click the inSync icon in the system tray and choose the Sync now option) or wait till the next schedule to auto sync.

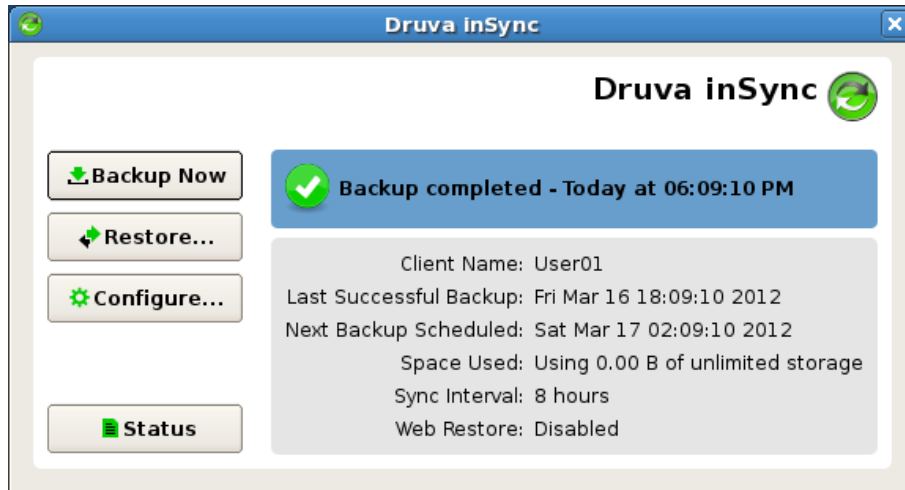


Figure 5: Druva inSync Control Panel

Breathe free. Now, your data is safe with inSync.

Restoring Backed Up Files

You can effectively get your backed up data using the **Restore** option. Follow the simple steps given below.

1. On the inSync client main window, click **Restore**.
2. Select the device from **Devices**. The list of snapshots is displayed under Snapshots.
3. Select the snapshot from the list. The files and folder associated with the snapshot are displayed on the right hand side panel.
4. Select the folder(s) or file(s) which you want to restore. Right-click the selected items and choose **Restore to Original Location** or **Restore to Custom Location**, and then continue.

Restoring Files using Web Restore

When you are away from your computer and you want to refer important files then the Web restore helps you to download your important files or folders.

To download the backed up files from Web, follow the steps given below.

1. Launch the Web browser.
2. Type the inSync server address in the address bar. For example, <https://192.168.50.220:443>
3. The Druva inSync Restore login page displays. Enter your email address and password
4. Select the device from which you want restore files.
5. The Druva inSync Restore window displays with inSync snapshots arranged by date on descending order. Select the snapshot from the list.
6. The contents of snapshot are displayed on the right hand side panel.
7. Choose the folder then click the **Download Folder** button located top right of the page. Or
8. Select a file and continue to save to the local disk.

Disabling the Server Side Restore

Using the **Server Side Restore** option, you can enable or disable permission of the inSync administrator to restore your data to the server. But the **Server Side Restore** option (see below) appears only when the inSync administrator selects the **Allow user to disable server-side restore** option in the user profile.

If the **Disable restore of data by Administrator to the server** check box is selected then the inSync administrator cannot restore your data at the server location. If the check box is not selected then inSync administrator can restore your data at the server side.

Contact

In case of any technical problem, contact your system administrator.

For errors in the document or further clarification, please ask your administrator to contact support@druva.com.
